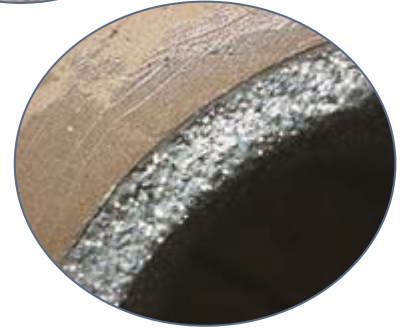


## PES 204 Heavy Duty Ceramic Repair Paste

PES 204 Heavy Duty Ceramic Repair Paste is a two component solvent free epoxy metal repair compound incorporating ceramic beads. The product has been designed for use in harsh operating environments subject to heavy wear, abrasion and impact. The material can used for repairs and resurfacing of equipment such as chutes, hoppers, pipe bends, pump casings and other process equipment in contact with aggregates and slurries.



### Main characteristics -

Two component  
 Solvent free epoxy  
 3:1 mixing ratio by volume  
 Usable life 45 minutes @ 68°F (20°C)  
 Touch dry 2 hours @ 68°F (20°C)  
 Full cure 6 days @ 68°F (20°C)  
 89 Rockwell R Hardness (Once fully cured)  
 Applied by spatula or applicator tool  
 Available in 5kg, 25kg pack sizes

### Mechanical Properties –

#### Adhesion

Tensile Shear to ASTM D1002 2100psi (148kg/cm<sup>2</sup>)

#### Compressive strength

Tested to ASTM D 695 15,500psi (1089kg/cm<sup>2</sup>)

#### Corrosion Resistance

Tested to ASTM B117 Minimum 5000 hours

#### Flexural Strength

Tested to ASTM D790 6000psi (420kg/cm<sup>2</sup>)

#### Heat Resistance

Suitable for water immersion up to 140°F (60°C) and intermittent contact with steam up to 212°F (100°C). Dry heat resistance up to 284°F (140°C).



Process pipe work  
blast prepared



Coal grinder at a steelworks relined and repaired using  
204 Heavy Duty Ceramic Repair Paste



Coal lines at a power station rebuilt  
and protected using PES 204 Heavy  
Duty Ceramic Repair Paste



Internal surfaces coated with  
PES 204 Heavy Duty Ceramic



All surfaces encapsulated with  
PES 202 Ceramic Repair Fluid